



YAMAHA YZF R1 (2009)

SLIP-ON OPEN EXHAUST SYSTEM + OPTIONAL LINK PIPE

Our sporty and lightweight SLIP-ON systems offer a great balance between price and performance and represent the first step in the exhaust system tuning process. The change will be also visual as our HEXAGONAL mufflers perfectly fit the exterior line of the R1 and add a clean racing image.

The muffler outer sleeve is made of titanium or carbon-fiber, which gives a special hi-tech touch to our SLIP-ON system. We offer street legal version and open system for race track use only.

PERFORMANCE

Measurements of the Akrapovic SLIP-ON system on the YAMAHA YZF R1 (without muffler insert):

Power & Torque: the exhaust system modification with the SLIP-ON OPEN system results in a major boost in performance, delivering a massive 163.9 HP at 12410 rpm on back wheel. But the increased power isn't available just at the top of the range; the system shows its quality already from 5500 rpm up through entire rpm range. Max. increased power between the Akrapovic and the stock system is 2.4 HP at 12430 rpm. Besides this, the torque is substantially higher in a lower rpm area at 3000 rpm and from middle to high rpm area.

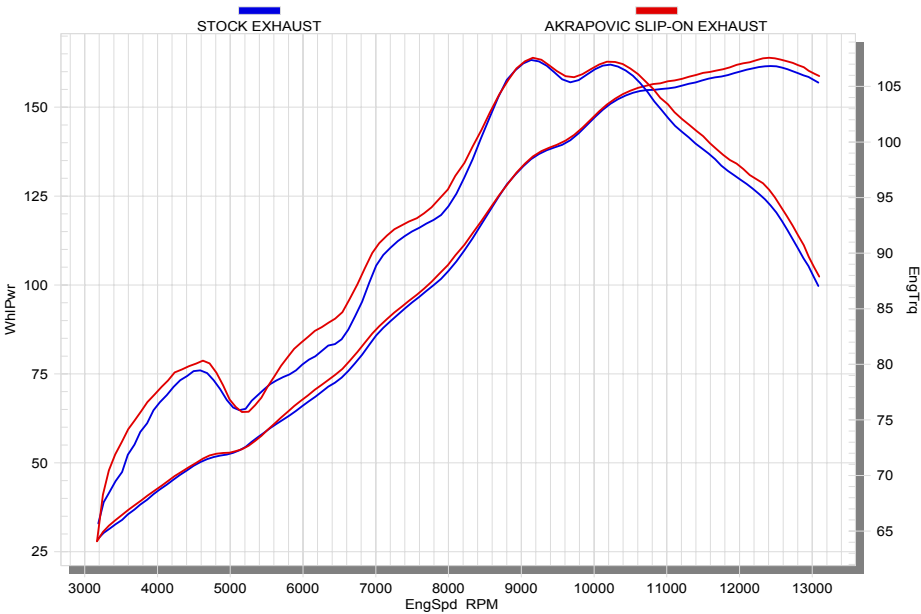


	PERFORMANCE		
	stock	AKRAPOVIC	max. increased power
max. rear wheel power HP / rpm (measured on Dynojet ATV)	161.6 / 12430	163.9 / 12410	2.4 / 12430

weight comparison (kg)	ADDITIONAL DATA				
	stock	AKRAPOVIC		difference	
	4.75	SS link pipe	TITANIUM link pipe	stock - S.S.	stock - TITANIUM
		-	3.31	-	1.44

weight comparison (kg)	stock	AKRAPOVIC
	98 / 6200	98 (open: 100) / 6200
legal for street use	YES	

Technical specifications of Akrapovic exhaust systems and related products subject to change without notice.



Product code: (110580) S-Y10SO9-ZC, (110579) S-Y10SO9-ZT
(110562) L-Y10SO9L optional Link pipe

Our sporty and lightweight SLIP-ON system offers a great balance between price and performance, and represents the first step in the exhaust system tuning process. The change will also be visual as our HEXAGONAL mufflers fit the exterior line of the R1 perfectly and add a clean racing image. The muffler outer sleeve is made of titanium or carbon fiber, which gives a special hi-tech touch to our SLIP-ON system. We offer an optional Y type link pipe made of conical titanium tubes for more power and torque. You will also save up to 4.13 kg, compared to using a stock system.

PERFORMANCE

Measurements of the Akrapovič SLIP-ON system on the YAMAHA YZF R1 (without a muffler insert):

Power & Torque: The exhaust system modification with the SLIP-ON OPEN + Y type link pipe system results in a major boost in performance, delivering a massive 164.2 HP at 12410 rpm on the back wheel. But the increased power is not available just at the top of the range; the system already exhibits its quality at 4800 rpm and up, through the entire rpm range. The maximum power increase between the Akrapovič and the stock system is 5.1 HP at 6000 rpm. Additionally, the torque is substantially higher in the lower rpm area at 3000 rpm, and in the middle to high rpm area.



OPTIONAL LINK PIPE

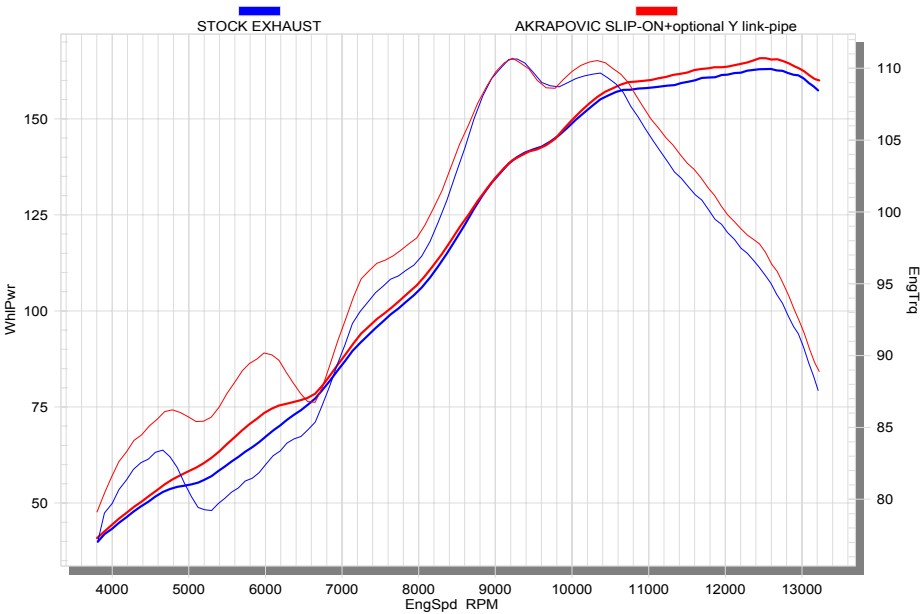
	PERFORMANCE		
	stock	AKRAPOVIC	max. increased power
max. rear wheel power HP / rpm (measured on Dynojet ATV)	161.6 / 12430	164.2 / 12410	5.1 / 6000

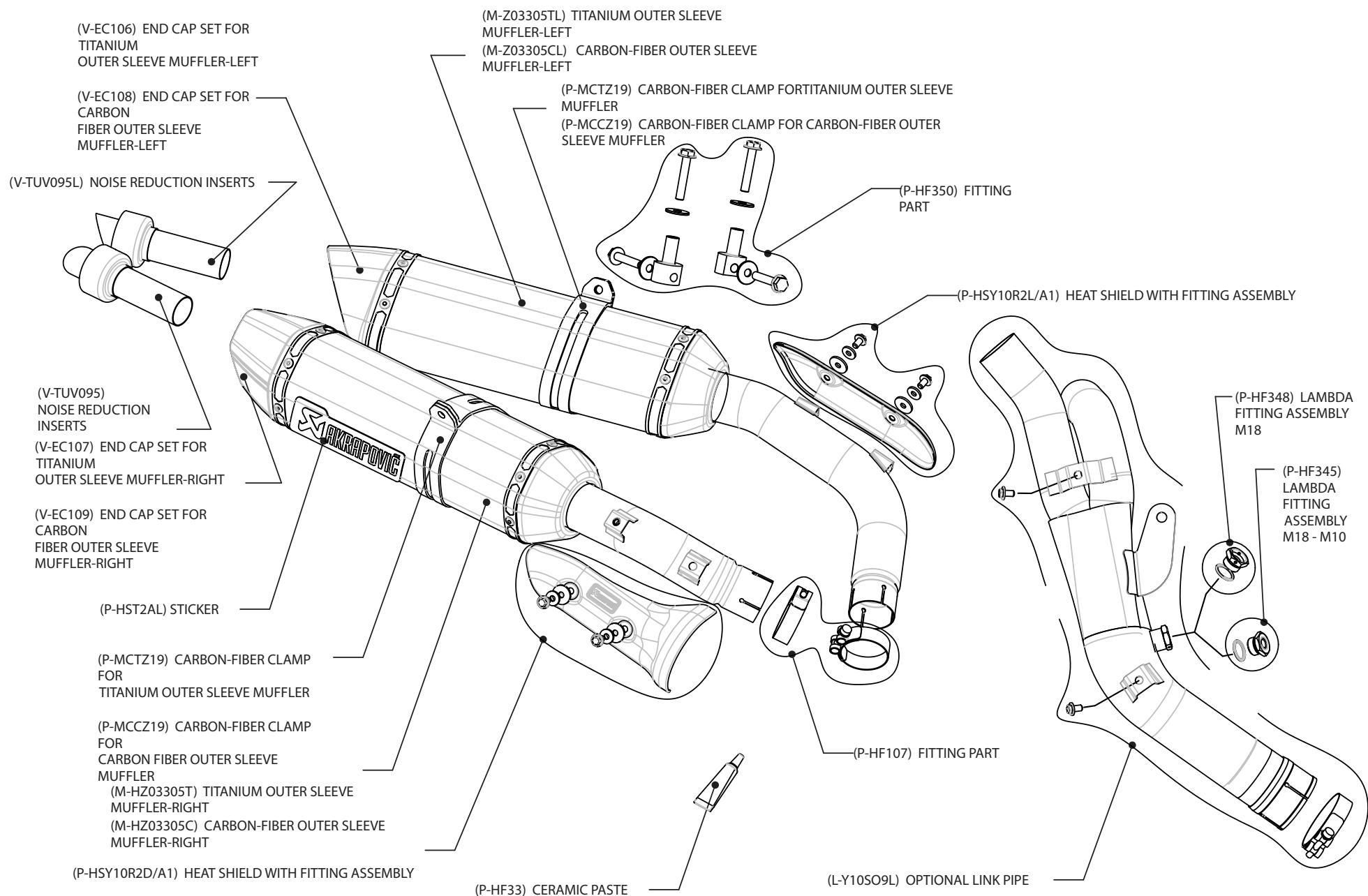
	ADDITIONAL DATA		
	stock	AKRAPOVIC	difference
	8.08	TITANIUM optional link pipe	stock - TITANIUM optional link pipe
		3.95	4.13

weight comparison (kg)	stock	AKRAPOVIC
	98 / 6200	100.5 / 6200
legal for street use	NO	

Technical specifications of Akrapovic exhaust systems and related products subject to change without notice.

Product code: (110580) S-Y10SO9-ZC, (110579) S-Y10SO9-ZT
(110562) L-Y10SO9L optional Link pipe





Product code: (110580) S-Y10SO9-ZC, (110579) S-Y10SO9-ZT
 (110562) L-Y10SO9L optional Link pipe